



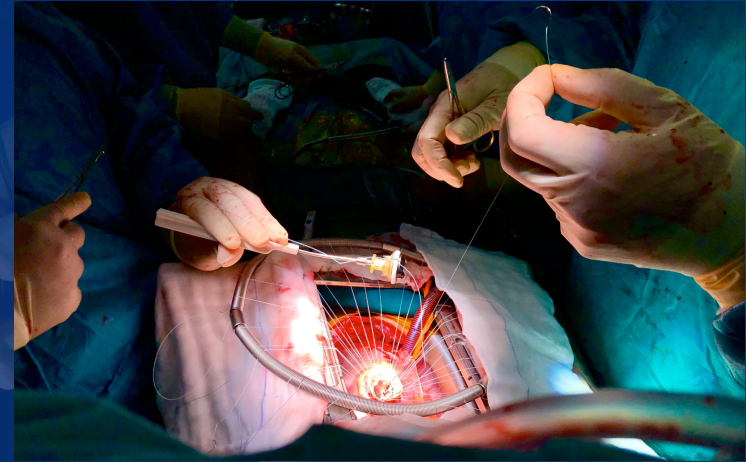
Wilhelmina Kinderziekenhuis

Houd je klep!

... wat als ze toch vervangen moet worden ?

Bram van Wijk & Gregor Krings

Centrum voor aangeboren Hartafwijking
UMC Utrecht



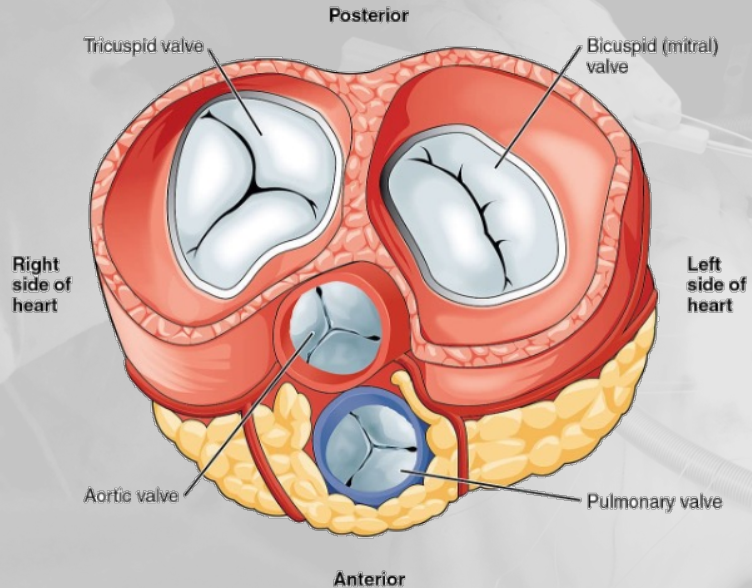
DISCLOSURES

No disclosures

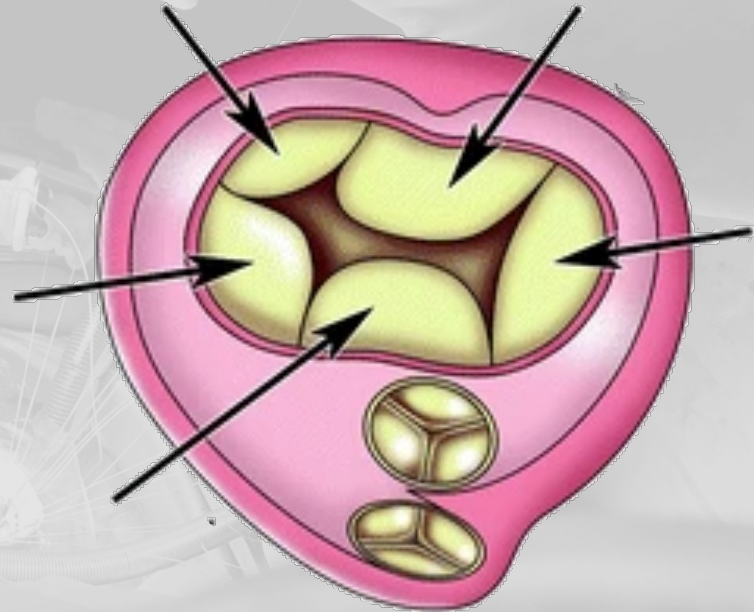


ANATOMIE AV KLEPPEN

Normaal



AVSD



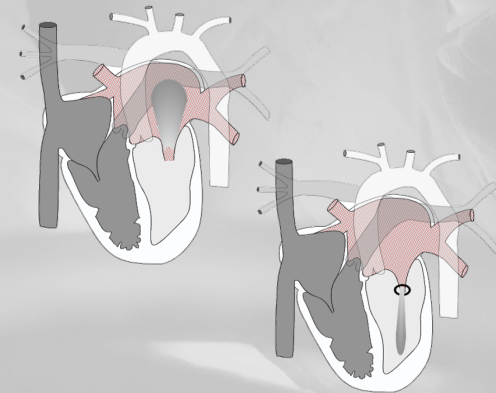
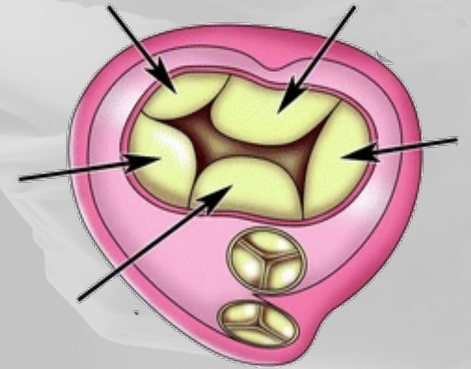
VAN PLASTIEK TOT VERVANGING

AV klep bij AVSD ...

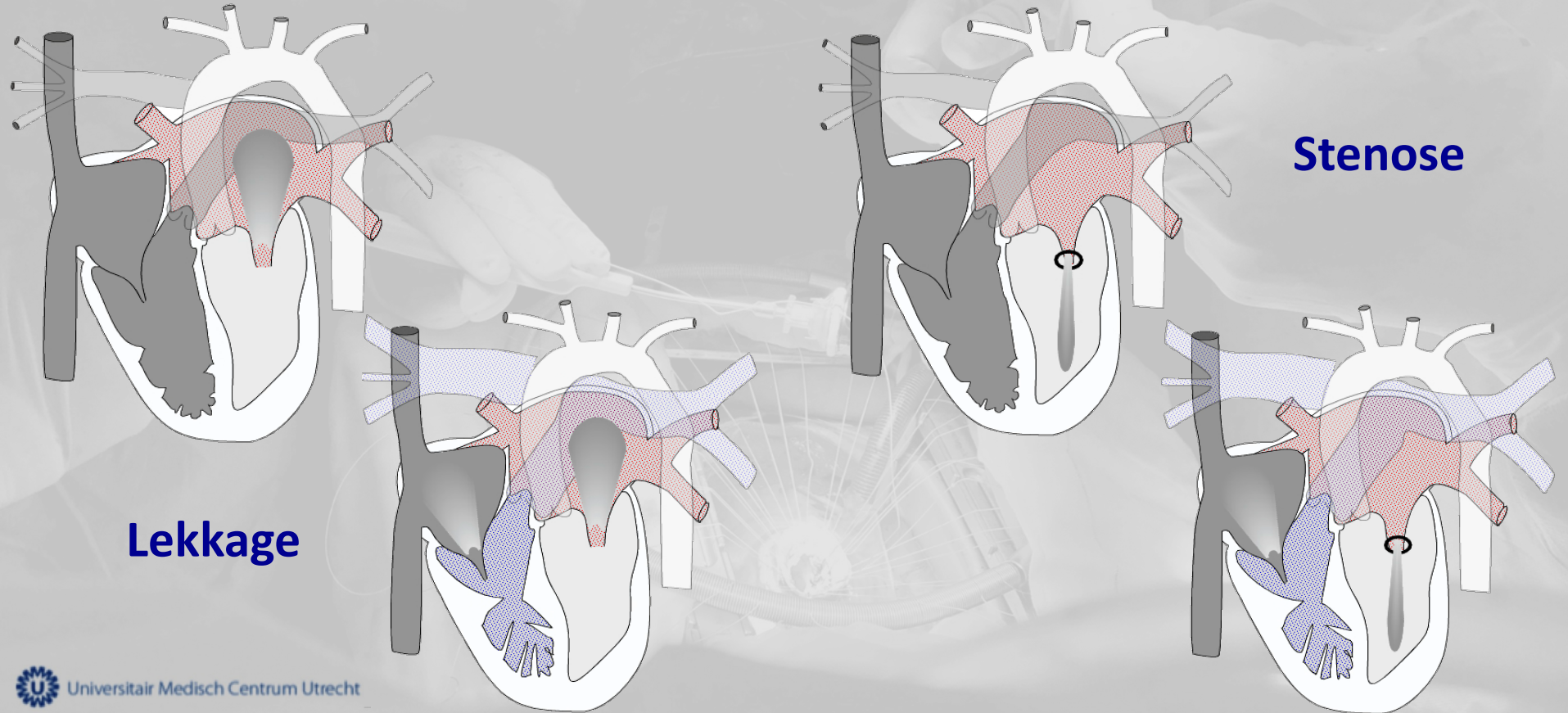
is geen Tricuspidaal of Mitraal klep ring-ring-oval
Het is een 2-in-1, een brug van een klep, 1-voor-2

behoud je klep ... *zo lang mogelijk !*

lekkage of vernauwing door plastic verbeteren

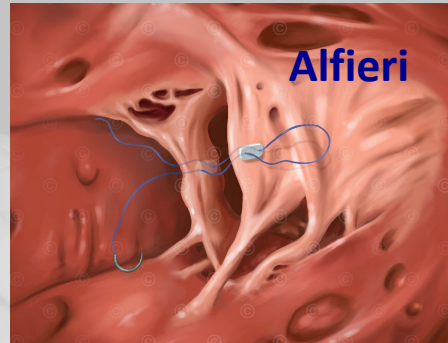
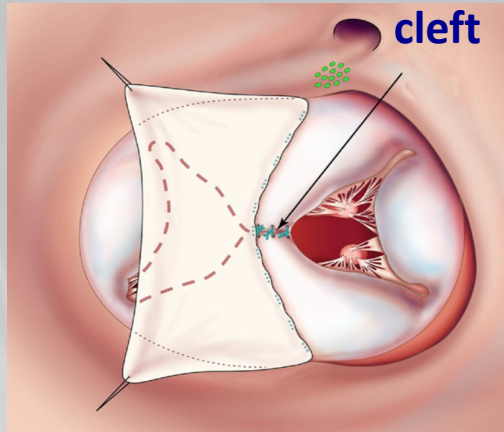


LEKKAGE EN STENOSE

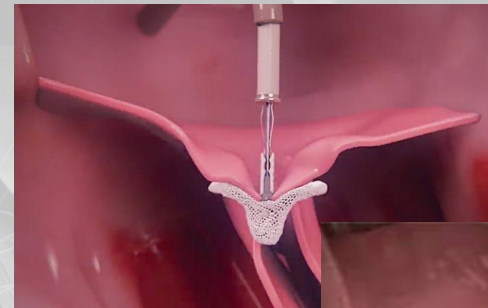


OPTIES PLASTIEK

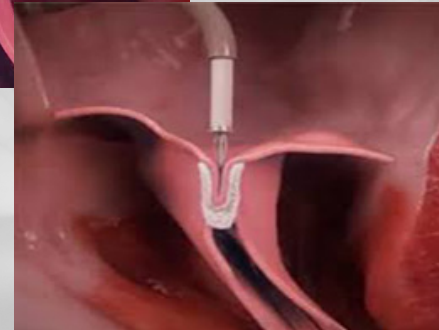
Chirurgisch



Catheter



Mitraclip



OPTIES VERVANGING CHIRURGISCH

Cruciaal

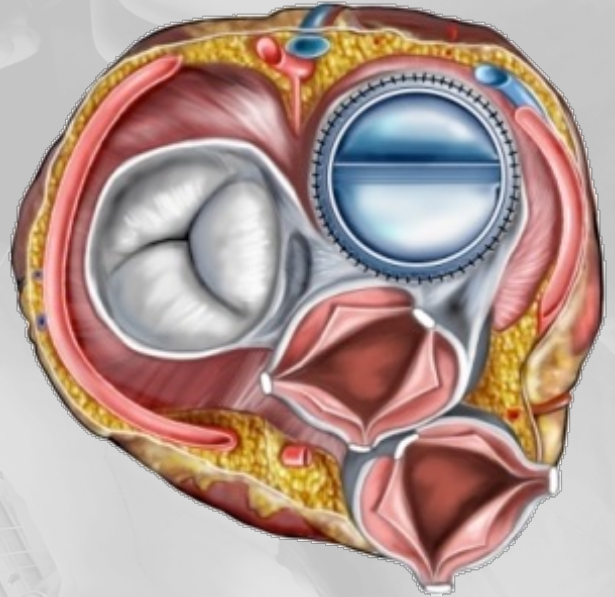
leeftijd en gewicht !

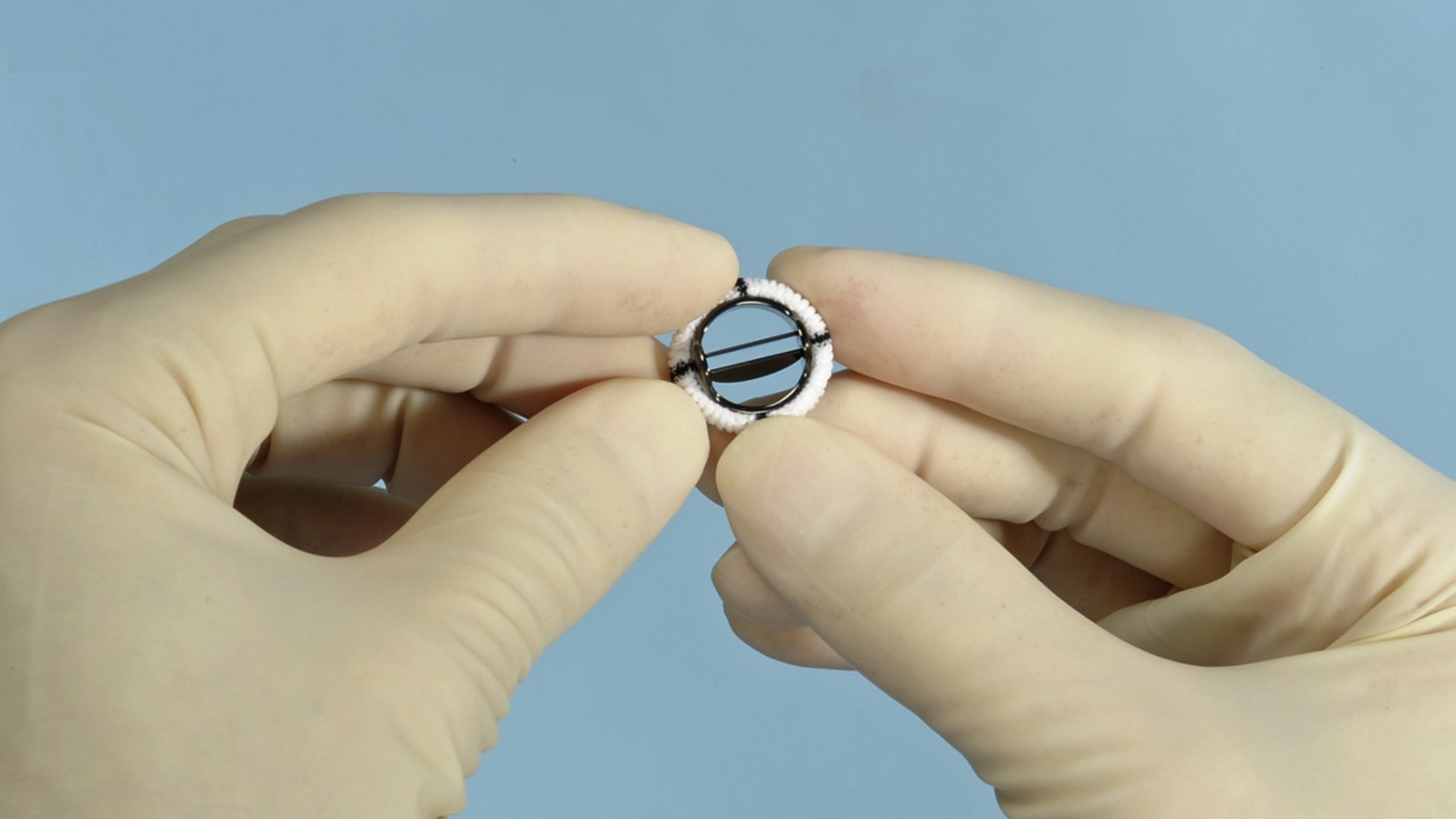
vroeg na 1^e correctie (5kg)

laat = volwassenen

bioklep (?)

kunstklep (15-33mm)





KUNSTKLEP

Masters Series 15 mm Mechanical Heart Valve

| Model | Tissue Annulus Diameter (mm) | Geometric Orifice Area (cm ²) | Implant Height Open (mm) | Overall Height Open (mm) | Cuff OD (mm) |
|---------------|------------------------------|---|--------------------------|--------------------------|--------------|
| Aortic | | | | | |
| 15 AHPJ-505 | 15 | 1.3 | 4.6 | 8.5 | 20 |
| Mitral | | | | | |
| 15 MHPJ-505 | 15 | 1.3 | 2.2 | 8.5 | 20 |

Masters Series Valves: HP Series Cuffed Valves

| Model | | Tissue Annulus Diameter (mm) | Geometric Orifice Area (cm ²) | Implant Height Open (mm) | Overall Height Open (mm) | Cuff OD (Standard / Expanded) (mm) |
|-------------------------|-------------------------|------------------------------|---|--------------------------|--------------------------|------------------------------------|
| Standard Polyester Cuff | Expanded Polyester Cuff | | | | | |
| Aortic | | | | | | |
| 17 AHPJ-505 | 17 AEHPJ-505 | 17 | 1.6 | 2.9 | 9.9 | 23/24 |
| 19 AHPJ-505 | 19 AEHPJ-505 | 19 | 2.1 | 3.0 | 10.6 | 25/26 |
| 21 AHPJ-505 | 21 AEHPJ-505 | 21 | 2.6 | 3.3 | 12.0 | 27/28 |
| 23 AHPJ-505 | 23 AEHPJ-505 | 23 | 3.1 | 3.3 | 13.3 | 29/31 |
| 25 AHPJ-505 | 25 AEHPJ-505 | 25 | 3.8 | 3.8 | 13.7 | 31/33 |
| 27 AHPJ-505 | 27 AEHPJ-505 | 27 | 4.4 | 4.6 | 14.6 | 33/35 |
| Mitral | | | | | | |
| 17 MHPJ-505 | -- | 17 | 1.6 | 2.9 | 9.9 | 23/24 |
| 19 MHPJ-505 | -- | 19 | 2.1 | 3.0 | 10.6 | 25/26 |
| 21 MHPJ-505 | -- | 21 | 2.6 | 3.3 | 12.0 | 27/28 |
| 23 MHPJ-505 | -- | 23 | 3.1 | 3.3 | 13.3 | 29/31 |
| 25 MHPJ-505 | -- | 25 | 3.8 | 3.8 | 13.7 | 31/33 |
| 27 MHPJ-505 | -- | 27 | 4.4 | 4.6 | 14.6 | 33/35 |

Kunstklep maten

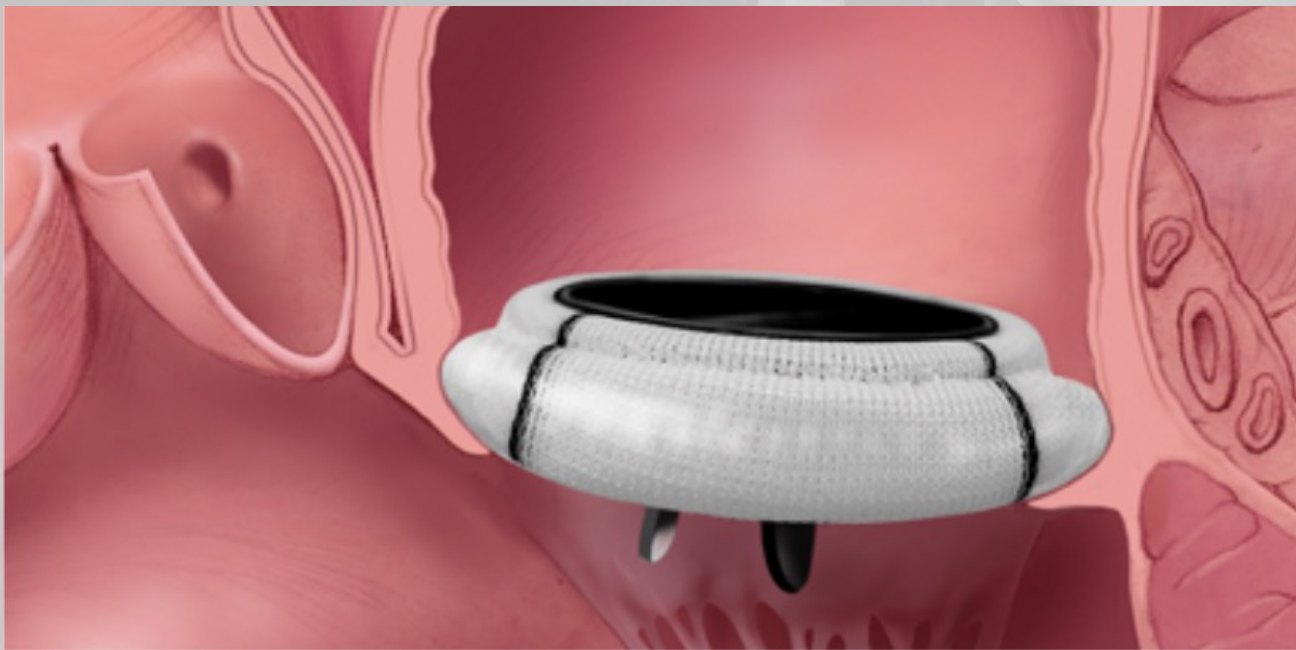
minimaal 15 mm binnen 20 mm buiten

maximaal 33 mm binnen 42 mm buiten

Masters Series Valves: Polyester Cuff

| Model | | Tissue Annulus Diameter (mm) | Geometric Orifice Area (cm ²) | Implant Height Open (mm) | Overall Height Open (mm) | Cuff OD (Standard / Expanded) (mm) |
|-------------------------|-------------------------|------------------------------|---|--------------------------|--------------------------|------------------------------------|
| Standard Polyester Cuff | Expanded Polyester Cuff | | | | | |
| Aortic | | | | | | |
| 19 AJ-501 | 19 AECJ-502 | 19 | 1.6 | 3.3 | 9.9 | 22/23 |
| 21 AJ-501 | 21 AECJ-502 | 21 | 2.1 | 3.7 | 10.6 | 24/25 |
| 23 AJ-501 | 23 AECJ-502 | 23 | 2.6 | 4.4 | 12.0 | 26/27 |
| 25 AJ-501 | 25 AECJ-502 | 25 | 3.1 | 5.2 | 13.3 | 28/29 |
| 27 AJ-501 | 27 AECJ-502 | 27 | 3.8 | 5.7 | 13.7 | 31/32 |
| 29 AJ-501 | 29 AECJ-502 | 29 | 4.4 | 6.5 | 14.6 | 33/35 |
| 31 AJ-501 | 31 AECJ-502 | 31 | 5.1 | 7.2 | 15.9 | 35/37 |
| Mitral | | | | | | |
| 19 MJ-501 | 19 MECJ-502 | 19 | 1.6 | 4.4 | 9.9 | 23/26 |
| 21 MJ-501 | 21 MECJ-502 | 21 | 2.1 | 4.5 | 10.6 | 26/29 |
| 23 MJ-501 | 23 MECJ-502 | 23 | 2.6 | 4.8 | 12.0 | 28/31 |
| 25 MJ-501 | 25 MECJ-502 | 25 | 3.1 | 5.8 | 13.3 | 30/33 |
| 27 MJ-501 | 27 MECJ-502 | 27 | 3.8 | 5.8 | 13.7 | 32/36 |
| 29 MJ-501 | 29 MECJ-502 | 29 | 4.4 | 6.6 | 14.6 | 35/38 |
| 31 MJ-501 | 31 MECJ-502 | 31 | 5.1 | 7.2 | 15.9 | 37/40 |
| 33 MJ-501 | 33 MECJ-502 | 33 | 5.1 | 8.2 | 15.9 | 39/42 |
| 35 MJ-501 | -- | 35 | 5.1 | 8.2 | 15.9 | 40/NA |
| 37 MJ-501 | -- | 37 | 5.1 | 8.2 | 15.9 | 40/NA |

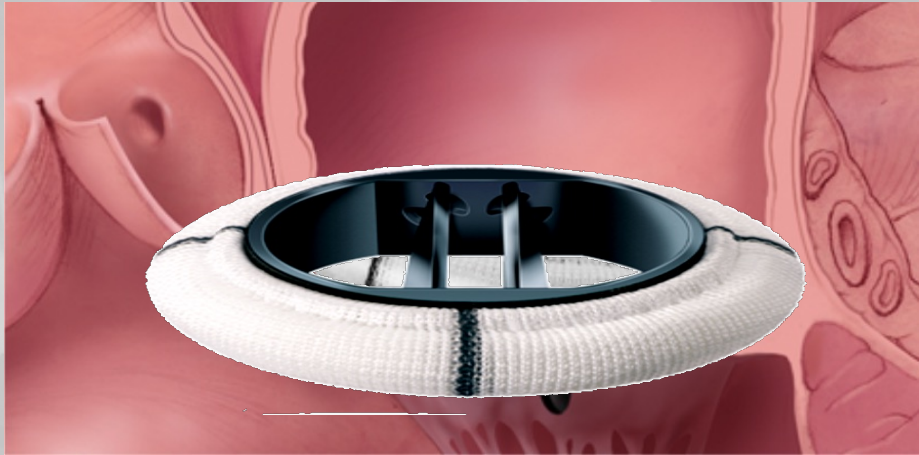
KUNSTKLEP



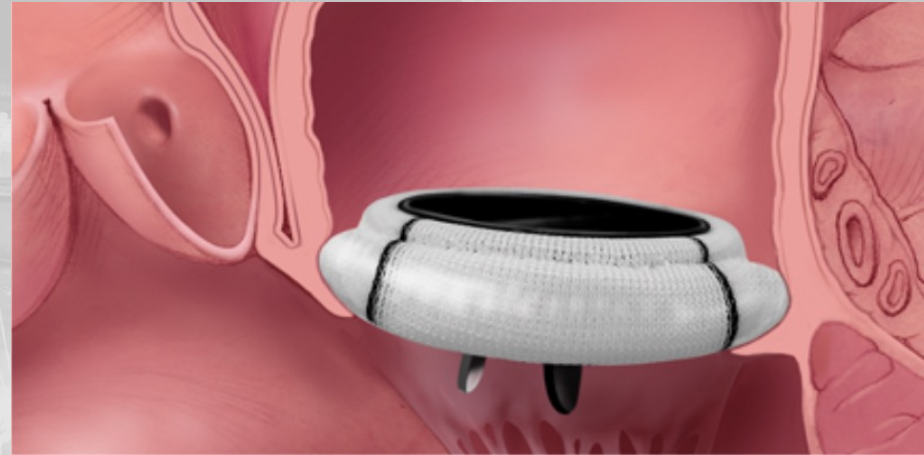
RICISO'S AV KLEPPEN



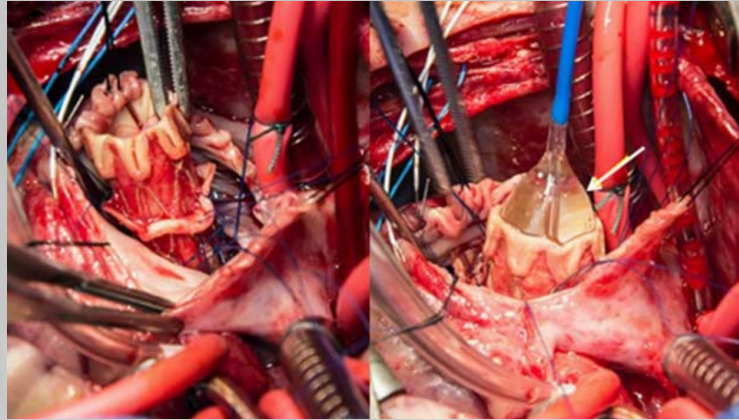
Kleine Kinderen



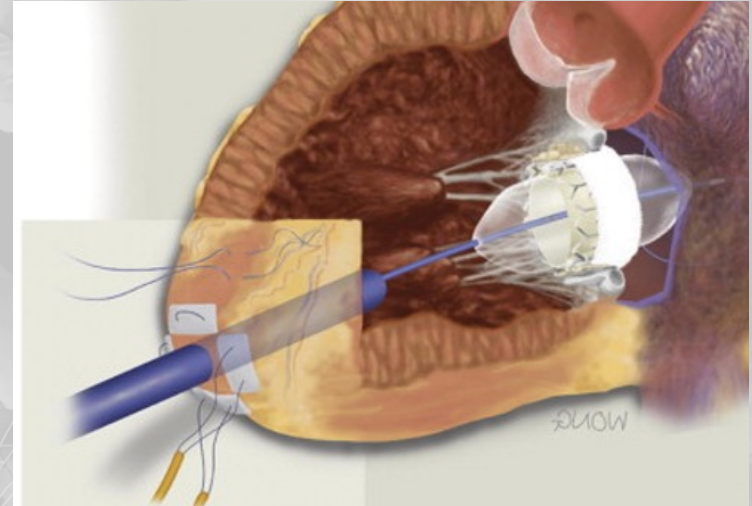
Volwassenen



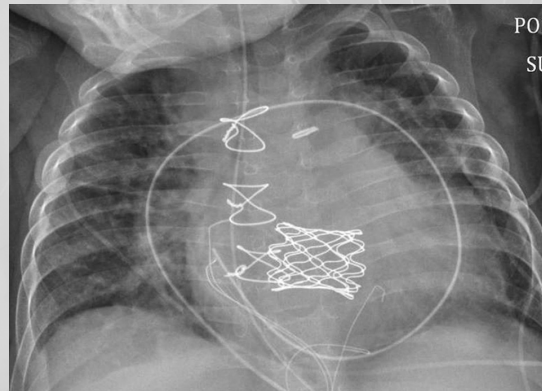
OPTIES VERVANGING: HYBRIDE



Melody kind 5kg



transapical



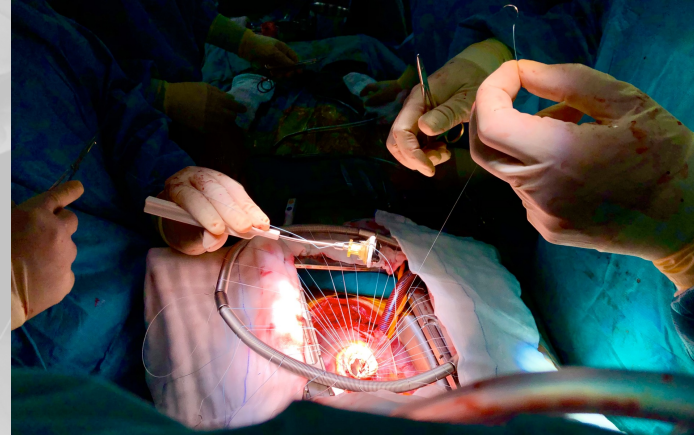
CONCLUSIE

houd de AV klep zo lang mogelijk

vervanging bij AVSD: vooral kunstklep

Antistolling (Vit K antagonist)

klein kind versus volwassenen: 2 werelden



HOUD DE KLEP

Bedankt voor jullie aandacht !

